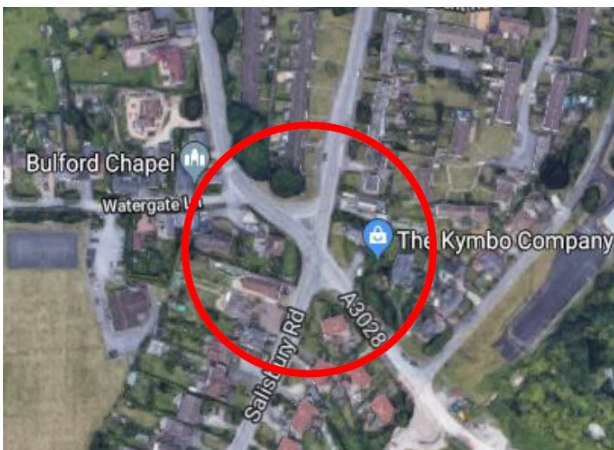


ARMY BASING PROGRAMME

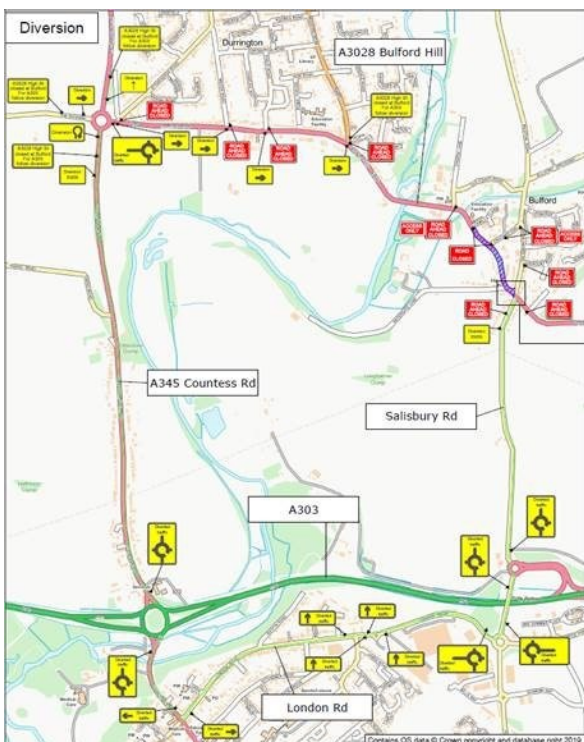
BULFORD TRAVEL NOTICE - AUGUST 2019, EDITION 5

Works

As part of the Army Basing works Lovell are contracted to build a double mini roundabout in Bulford village to replace the existing busy crossroads. Works will commence on 12 Aug 19 to resurface the junction and form the double roundabout. These works will happen overnight for 3 nights and will require full night time closure from 20:00 until 06:00 the following morning.



Diversions will be in place as per the below diversion plan.



DIVERSION PLAN

Works

To create a mini roundabout to replace the current 'T' junction where Orchard End meets the A3028. Works have commenced and will be completed in two phases.

The first Phase includes the modification of kerb lines in readiness to form the mini roundabout, these works will complete 23 Aug 19.



Traffic will be managed by 3 way traffic lights manually controlled between the hours of 07:00 and 19:00 (automatic vehicle activated between 19:00 and 07:00)

The second phase commences on 2 Sep 19 for a period of 3 nights. These works will include the formation of the mini roundabout and resurface the road junction and will require full night time closures from 20:00 until 06:00 the following morning. Diversions will be in place as per the diversion plan.

Army Basing Contact:

Email: DIO-ABPSPTARoadworks@mod.gov.uk