

REBASING HEALTHCARE INFORMATION

When moving back to the UK it is important that you understand how to access healthcare.

Information provided in this leaflet will help you and your family to do this. If you are unsure about anything in relation to you or your family's healthcare then you should speak to your Unit or Local HIVE as soon as possible.

The provision of healthcare to you and your family will depend on where you live.

- For **Serving Personnel** - You will see little difference; your routine healthcare will continue to be delivered through your local Defence Primary Healthcare (military) medical centre.
- For your **family** - You may find that arrangements change as not all UK *military* medical centres offer a Families Practice that families can join. If the local medical centre does not offer a family service then your **family must register with a local NHS GP practice**. If you are unsure whether your family will be able to access a military medical centre then speak to your Unit or Local HIVE immediately.

Choosing a Local NHS GP Practice and accessing other health services

The choice of local NHS GP for your family will depend on the address of your new home. Your local practices can be found at the following sites:

- England - [NHS England Choices](#)
- Scotland - [NHS Scotland - Find Local Services](#)

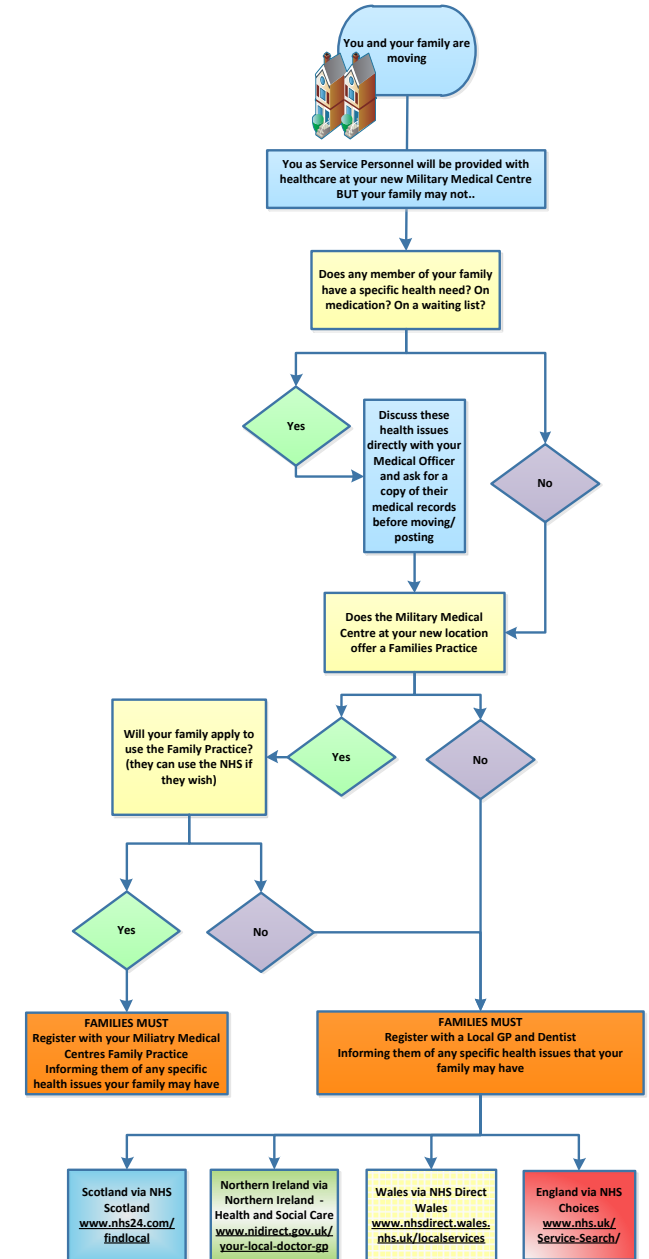
- [Wales – NHS Direct Wales.](#)
- [Northern Ireland - Health and Social Care](#)

Your family can **register with a GP** before they relocate, as soon as they know where they are going to be living. It will also be important to **identify a local dentist and register with them as soon as possible**. Information on dentists and other NHS services such as accessing hospitals, opticians, pharmacists and support for carers can be found through the above links.

Once your family member has registered with a GP, their existing medical records will be transferred. If they have specific health needs including medication, treatment and/or additional care they should discuss this directly with their Medical Officer and ask for a summary of their medical records before moving/posting. **If a family member has specific health needs it is essential that the GP and other services are made fully aware** of their needs when registering and before they move. This will ensure that the care they currently receive continues. Don't forget, this also includes the need to ensure that maternity services are in place if a member of your family is pregnant and that your local health visitor is aware of under 5's.

The **GP** should also be alerted if family members are undergoing a course of treatment or are on a waiting list for treatment. These needs will then be taken into account when they move allowing for the care they are receiving to continue.

In line with the Armed Forces Covenant you and your family are entitled to the same access to health services as the general public in the area in which you live and should not be disadvantaged in accessing health services.



FAMILY HEALTHCARE CHECKLIST

Find a local GP and Dentist as soon as you know your new location

- England - [NHS England Choices](#)
- Scotland - [NHS Scotland - Find Local Services](#)
- Wales – [NHS Direct Wales](#)
- Northern Ireland - [Health and Social Care](#)

Register with that GP and Dentist

Inform the GP of any health need, any course of treatment or if on a waiting list for treatment.

Inform the local health visitor and other services that you'll be moving and let them know of any specific health need.

Key Contacts [Add/amend to fit your local contacts]

Your welfare officer [or the most appropriate]

Army Welfare and Support

AWS Intake and Assessment Team (IAT)
Tel: 01904 662613 (for Scotland, NI, Catterick, Preston, London, Worthy Down, Kent and International).
For all other areas go via the military directory of enquiries on: 02072 189000

Army Hives [insert RAF and Navy contact as appropriate]

Army Family Federations [insert RAF and Navy contact as appropriate]

Health and Additional Needs Specialist
Tel: 07552 861983
Email additionalneeds@aff.org.uk
Or visit www.aff.org.uk

Additional support

[Add to and amend to fit in with your local contacts inc. your Local Authority]

The Soldiers Charity

www.soldierscharity.org

NHS Choices Service Search

www.nhs.uk/Service-Search/GP/LocationSearch/4

NHS Choices Armed Forces healthcare

www.nhs.uk/NHSEngland/Militaryhealthcare/Pages/Militaryhealthcare.aspx

NHS England

www.england.nhs.uk

The Royal British Legion

www.britishlegion.org.uk

SSAFA

www.ssafa.org.uk

Help for Heroes

www.helpforheroes.org.uk

REBASING HEALTHCARE INFORMATION

